

BUCHANAN STREET BIORETENTION

JANUARY 2009

Scale: 1"=5'

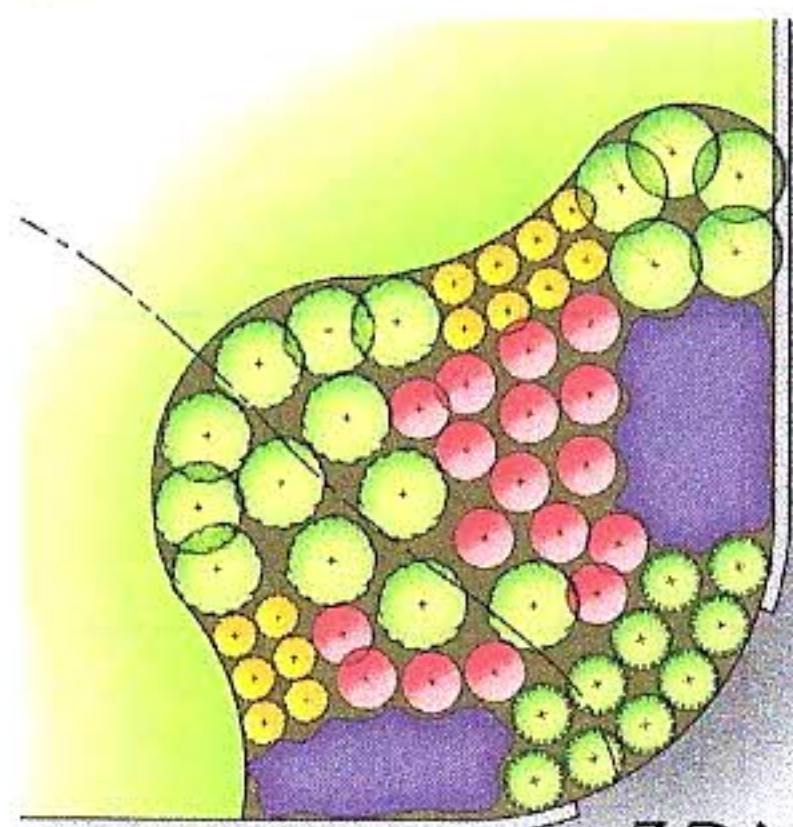


The City of



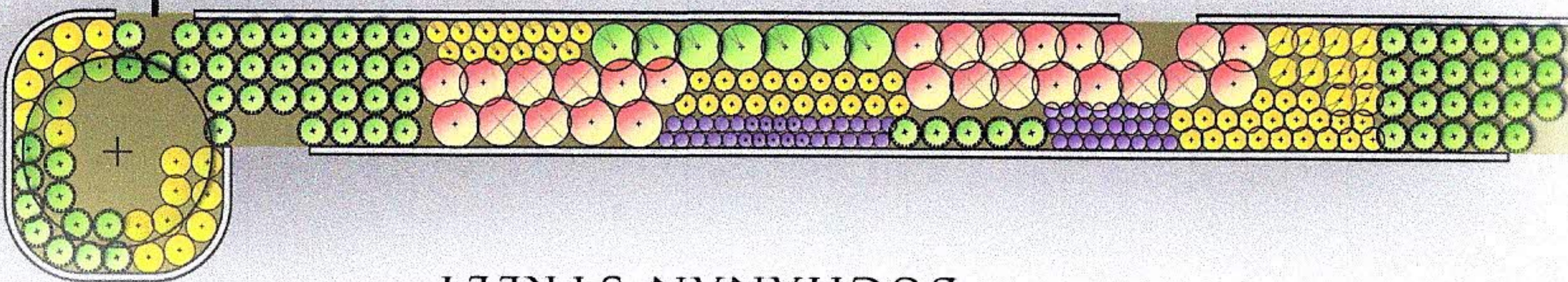
MOUNT RAINIER

PRINCE GEORGE'S POOL PARKING



PARKING ENTRANCE

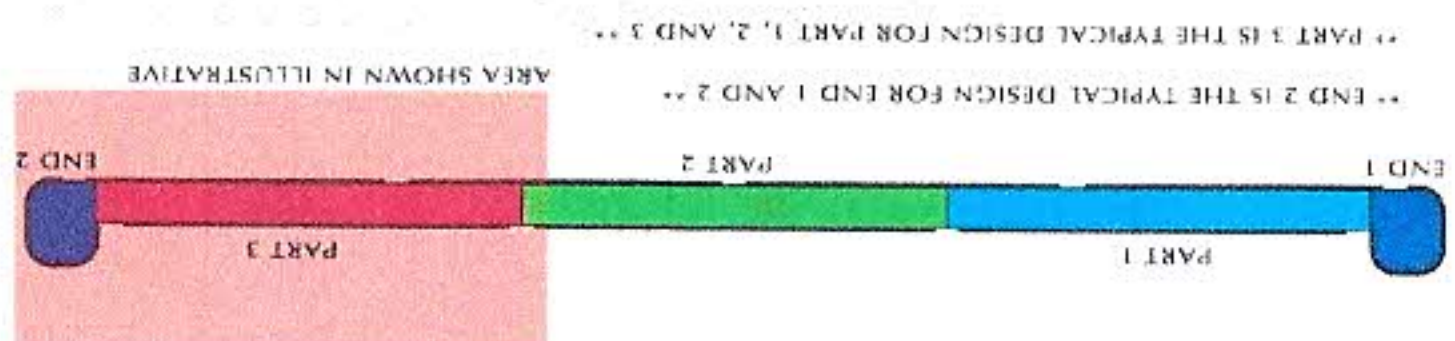
CURB CUTS



BUCHANAN STREET

BUCHANAN STREET BIORETENTION PLANT LIST

Key	Qty.	Botanical Name	Common Name	Size	Spacing	Remarks
SHRUBS						
HV	2	<i>Hammamelis virginiana</i>	Common Witch-hazel	5 gal. BB	10'	Mature, well-rooted
GRASSES						
AV	21	<i>Andropogon virginicus</i>	Broomsedge Bluestem	2 gal.	3'	Mature, well-rooted
CS	207	<i>Carex stricta</i>	Tussock Sedge	2 gal.	2'	Mature, well-rooted
PERENNIALS						
AC	72	<i>Aquilegia canadensis</i>	Columbine	1 gal.	1'	Mature, well-rooted
AI	63	<i>Asclepias incarnata</i>	Swamp Milkweed	2 gal.	18"	Mature, well-rooted
EF	36	<i>Eupatorium fistulosum</i>	Joe-Pye Weed	2 gal.	3'	Mature, well-rooted
ED	63	<i>Erythraea dactyloides</i>	White Wood Aster	1 gal.	1'	Mature, well-rooted
LSP	54	<i>Liatris spicata</i>	Blazing Star	1 gal.	2'	Mature, well-rooted
LC	39	<i>Lobelia cardinalis</i>	Cardinal Flower	1 gal.	16"	Mature, well-rooted
LS	30	<i>Lobelia siphilitica</i>	Great Blue Lobelia	1 gal.	2'	Mature, well-rooted
MV	27	<i>Mentzelia virginiana</i>	Virginia Bluebells	1 gal.	1'	Mature, well-rooted
RF	57	<i>Rudbeckia fulgida 'Goldstrum'</i>	Black-Eyed Susan	1 gal.	16"	Mature, well-rooted
SN	42	<i>Symphoricarpos novae-angliae</i>	New England Aster	2 gal.	3'	Mature, well-rooted



KEY PLAN

